

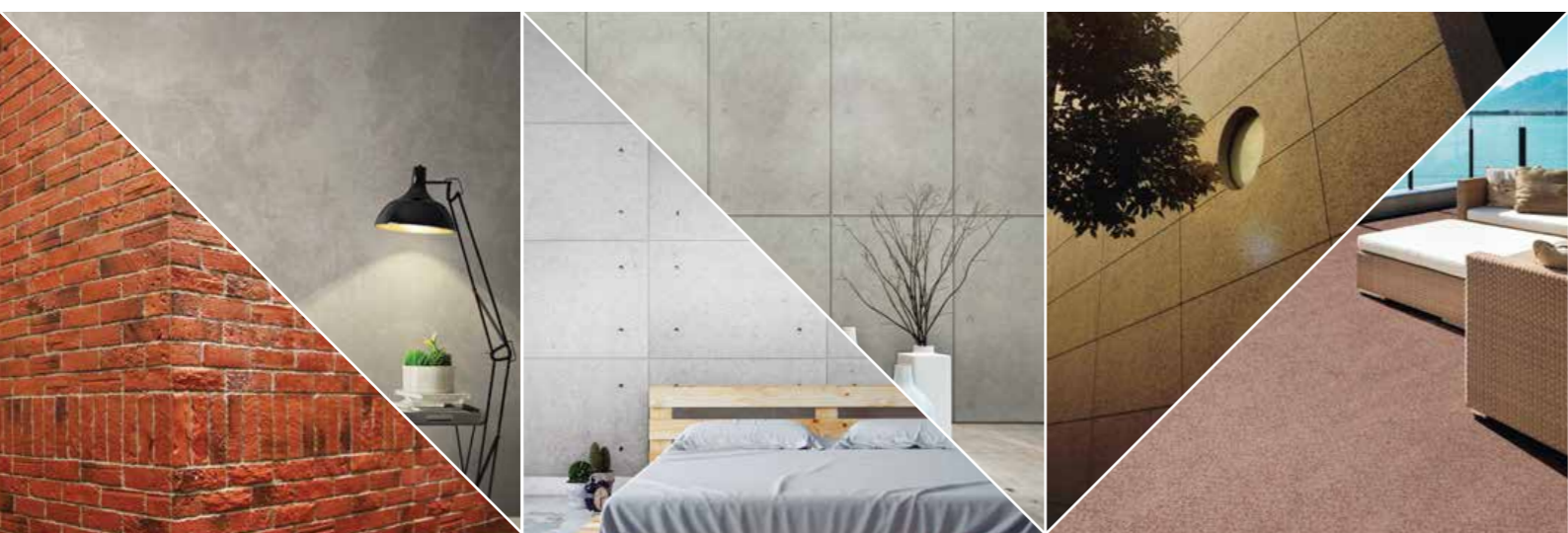
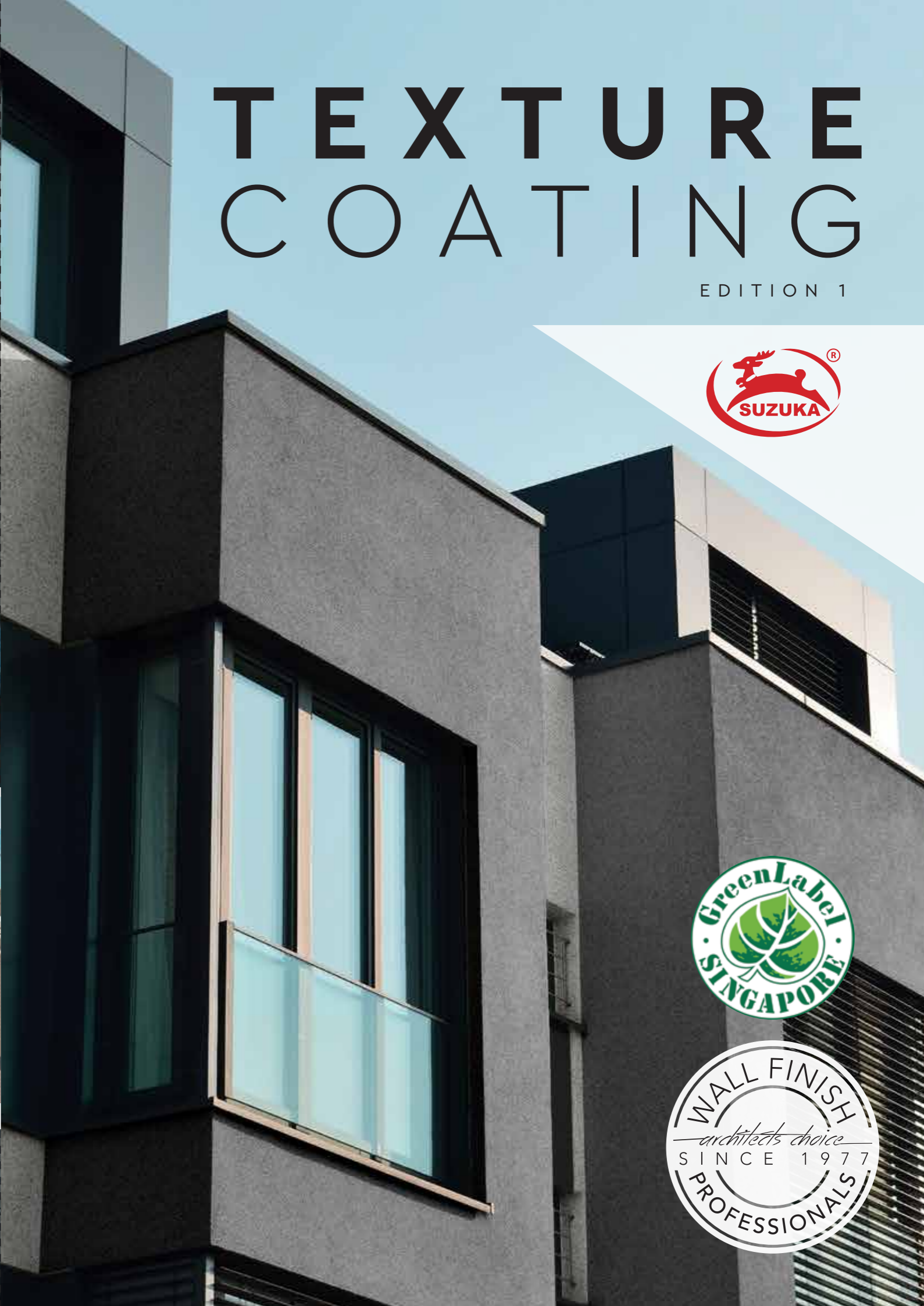


WIN*
RM1,000!

Join our photo contest now!
*T&C Apply More info: suzuka.com.my/promotion

TEXTURE COATING



EDITION 1



BRICK & STONE VENEER • TEXTURED PAINTS • KASTPANEL • ECES • TEXTURE COATING • PEBBLE STONE COATING



suzuka.com.my

  [suzuka.group](https://www.suzuka.group) | Hotline : +6012-3595 677

TAIWAN • MALAYSIA • THAILAND



STC-T12020





NSC-619



TC-725

MGM-323



TC-718



NSC-601



MAGIC GRANITE

With the multi-tone combination of brilliant inorganic mineral flakes, a natural and coarse, yet exquisite granite look is created.

PACKING DATA

PRIMER (EMP)	+	TEXTURE	+	TOPCOAT (FSI)
1 L		25 kg		1 L

COVERAGE : 5-6m²



MGM-322



MGM-323



MGM-321



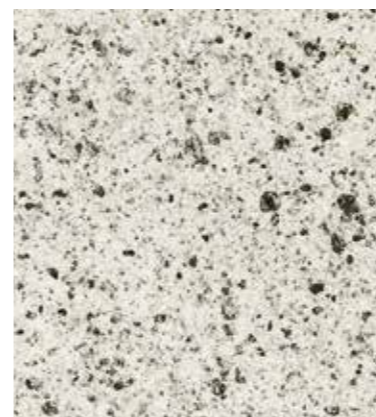
MGM-324



MGM-310



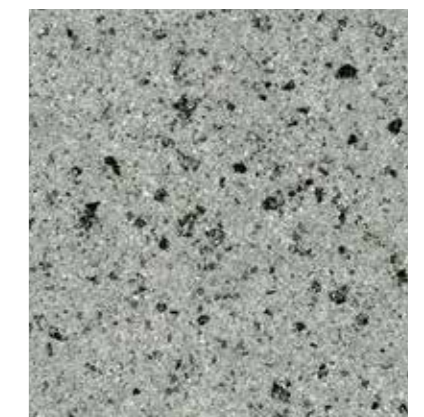
MGM-303



MGM-301

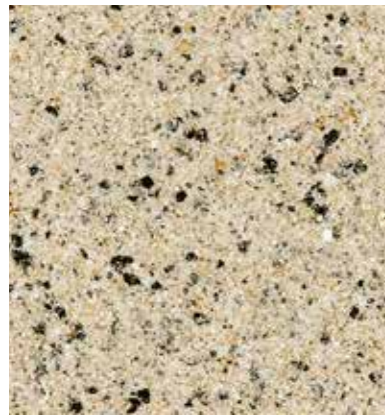


MGM-311



MGM-309

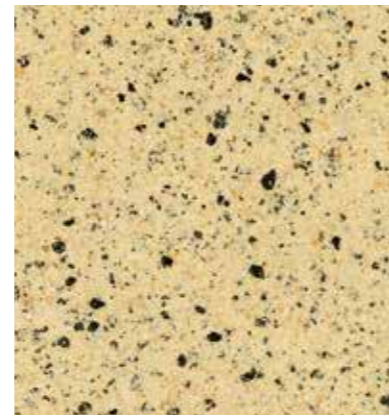
* May vary in color due to lighting and printing. Please examine product samples prior ordering.



MGM-312



MGM-304



MGM-313



MGM-315



MGM-319



MGM-317



MGM-305



MGM-318



MGM-307



MGM-302



MGM-308



MGM-320



NSC-608

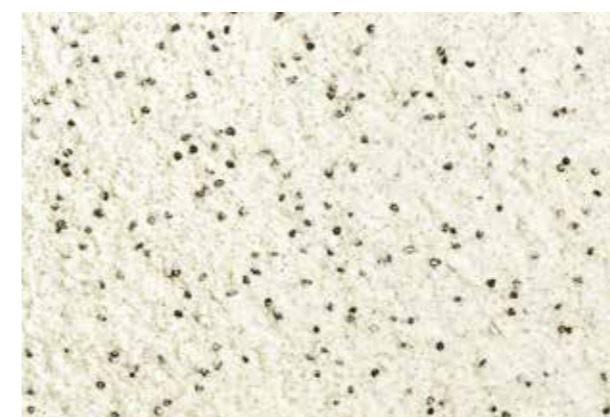
STONY COAT

Using a combination of color sands, SUZUKA® Stony Coat crafts the authentic effects of natural stones. Its granular surface gives the wall a bold and prominent finish.

PACKING DATA

PRIMER (EMP)	TEXTURE	TOPCOAT (FSI)
1 L	25 kg	1 L

COVERAGE : 5-6m²



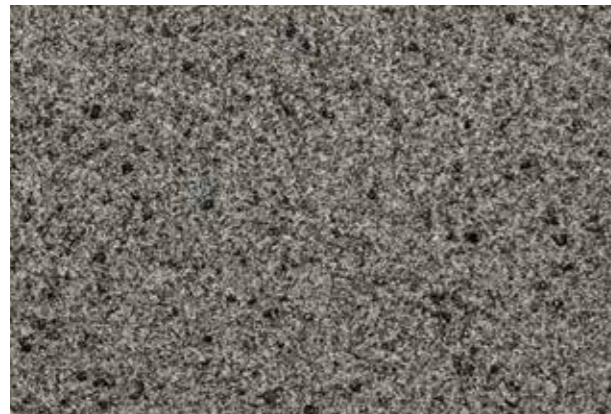
NSC-601



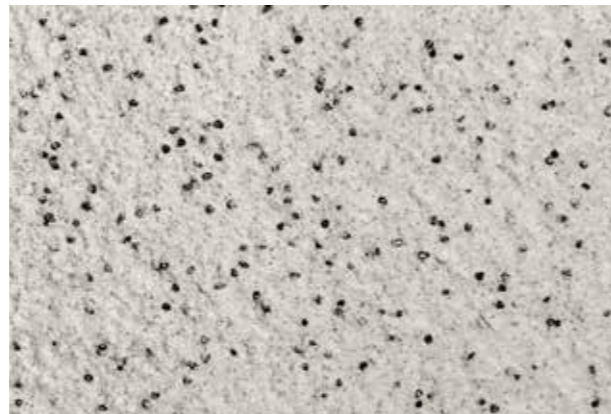
NSC-606



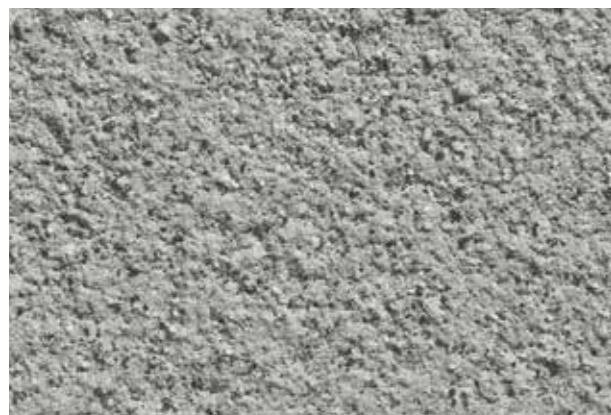
NSC-620



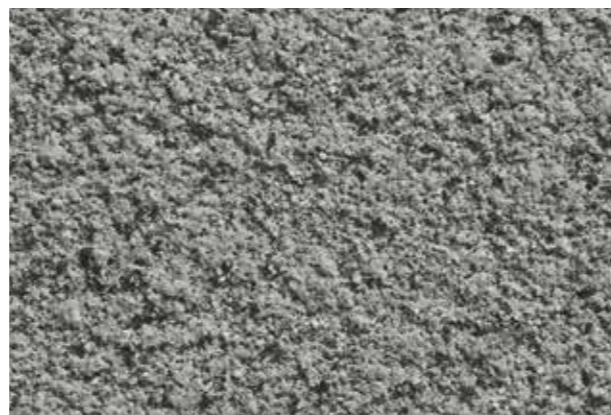
NSC-620



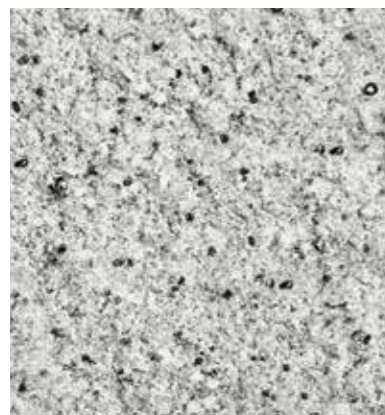
NSC-607



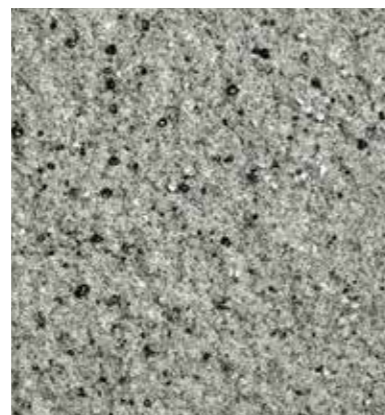
NSC-622



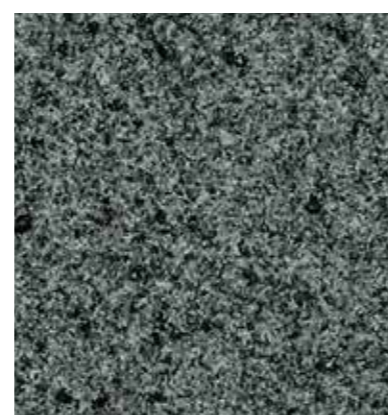
NSC-623



NSC-608



NSC-609



NSC-621



NSC-602



NSC-605



NSC-604



NSC-603



NSC-610



NSC-619



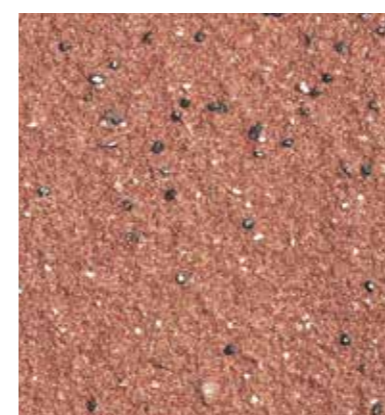
NSC-612



NSC-611



NSC-614



NSC-616



NSC-617



NSC-618

* May vary in color due to lighting and printing. Please examine product samples prior ordering.



TC-726

CERAMIC COAT

The blend of fine grandeur color sands forms a suave and refined texture, giving the walls an elegant and graceful outlook.

PACKING DATA

PRIMER (EMP)	+	TEXTURE	+	TOPCOAT (FSI)
1 L		25 kg		1 L

COVERAGE : 7-8m²



TC-704



TC-706



TC-705



TC-725



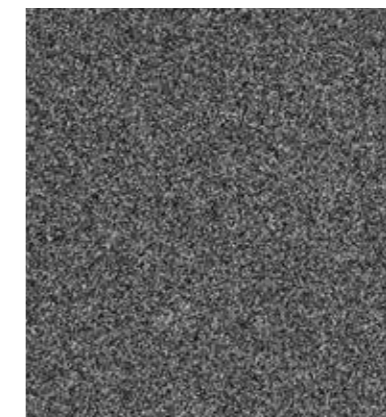
TC-726



TC-722



TC-723



TC-724



TC-727



TC-717



TC-718



TC-721

* May vary in color due to lighting and printing. Please examine product samples prior ordering.



TC-702



TC-703



TC-709



TC-701



TC-707



TC-719



TC-708



TC-711



TC-710



TC-716



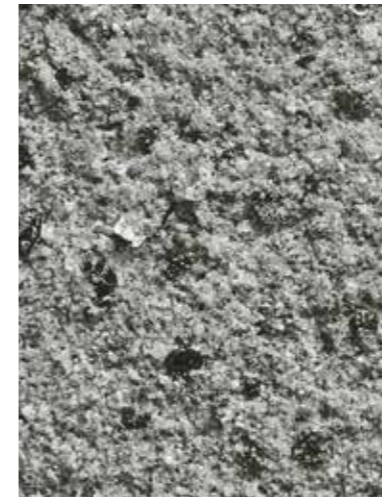
TC-713



TC-715

THE DIFFERENCE BETWEEN

MAGIC GRANITE



- Rougher surface
- With mineral flakes, it brings minor reflective effects, to create extraordinary looks.

STONY COAT



- Rough surface
- With natural stone, to create natural stone look effect.

CERAMIC COAT



- Sandy surface
- Create fine and simple looks.



TC-710

* May vary in color due to lighting and printing. Please examine product samples prior ordering.

TOOLS: SUZUKA® SPRAY GUY



FEATURES AND BENEFITS

- Consistent spray pressure
- Easy maintenance
- Easy to clean
- Easy to control
- Exchangeable nozzle
- No replacement parts required
- Made in Taiwan



Accessories : SPRAY GUN X 1PC + AIR NOZZLE X 3PCS + MATERIAL NOZZLE X 3PCS

Nozzle code	A1	A2	A3	M1	M2	M3
Nozzle diameter	1.5mm	2.0mm	2.5mm	5.0mm	6.5mm	8.0mm
Suitable for :	-	NSC	MGM/TC	TC	NSC	MGM



FEATURES & BENEFITS FOR SUZUKA® PRIMER (EMP)

- Protects against alkaline and efflorescence.
- Excellent adhesion on masonry substrate.
- Water based, non-hazardous, low odor, non-toxic, formaldehyde and heavy metal free.



FEATURES & BENEFITS FOR SUZUKA® TOP COAT (FSI CLEAR)

- Protects against weather and ultraviolet damage.
- Provides dirt and stain resistance.
- Protects against fungus and algae growth.
- Low sheen and preserves original color.
- Water based, low odor, non-hazardous, non-toxic, formaldehyde and heavy metal free.
- Easy to apply – prevents uneven appearance when dried.

TEXTURE COATING PACKING & CONSUMPTION

Process	Product Code	Dilution	Packing	Number Of Coats	Coating Interval (Hrs)	Consumption	Coverage /Drum	Application Tools	
1	Surface Preparation	Surface shall be dry and free from dirt, oil, grease and other contaminants. All cracks or defective substrate shall be repaired with suitable cement filler.							
2	PRIMER	EMP	Max 5% with clean water	1 L	1	3	7 - 9 m ²	Roller or Brush	
				18 L			126 - 162 m ²		
3	TEXTURE COAT	MGM	Max 5% with clean water	25 KG	1 - 2	24	4.2 - 5.0 kg/m ²	5 - 6 m ²	Spray Gun Nozzle (8mm)
		NSC	Max 5% with clean water	25 KG	1 - 2	24	4.2 - 5.0 kg/m ²	5 - 6 m ²	Spray Gun Nozzle (6.5mm)
		TC	Max 5% with clean water	25 KG	1 - 2	24	3.0 - 3.6 kg/m ²	7 - 8 m ²	Spray Gun Nozzle (5mm)
4	TOP COAT	FSI	FSI Clear	1 L	1 - 2	-	8 - 10 m ² /l/coat	8 - 10 m ²	Roller or Brush
				15 L			120 - 150 m ²		

No	Primer Color	Color Codes	No	Primer Color	Color Codes	No	Primer Color	Color Codes
1	EMP White	EMP-01-WH	4	EMP Light Red	EMP-04-LR	7	EMP Light Grey	EMP-07-LG
2	EMP Light Yellow	EMP-02-LY	5	EMP Dark Red	EMP-05-DR	8	EMP Dark Grey	EMP-08-DG
3	EMP Dark Yellow	EMP-03-DY	6	EMP Dark Brown	EMP-06-DB			

