

kikusui

F☆☆☆☆

JIS K 5663 1 class (matte)
JIS K 5663 1級 (啞光)
Fireproof material certified product
防火材料認證品
Non-combustible material NM-8585
不燃材料 NM-8585
Quasi-non-combustible material QM-9816
準不燃材料 QM-9816
Flame retardant material RM-9364
阻燃材料 RM-9364

Interior Eco-friendly Multifunctional Water-based Acrylic Resin Paint
室內環保多功能水性丙烯酸樹脂漆

Water-based Fine Coat ECO

Protecting beauty and health, creating a safe living space
守護美麗與健康, 創造安全生活空間

ANTIBACTERIAL
抗菌

ANTIVIRUS
抗病毒

**ULTRA LOW
VOC**
超低VOC

LOW ODOR
低氣味

**CONTAMINATION
REBOVABILITY**
污染物去除性

**ANTI-ALGAE
AND
ANTI-MOLD PROPERTIES**
抗藻和防黴特性

Water-based Fine Coat Eco

can suppress the growth of viruses and fungi on walls, making it recommended for use in children's rooms, hospitals, and other places. It is also safe due to its ultra-low VOC.

可以抑制牆壁上病毒和真菌的繁殖，非常適合在兒童房、醫院等地使用。同時，它具有超低揮發性有機物 (VOC)，非常安全。

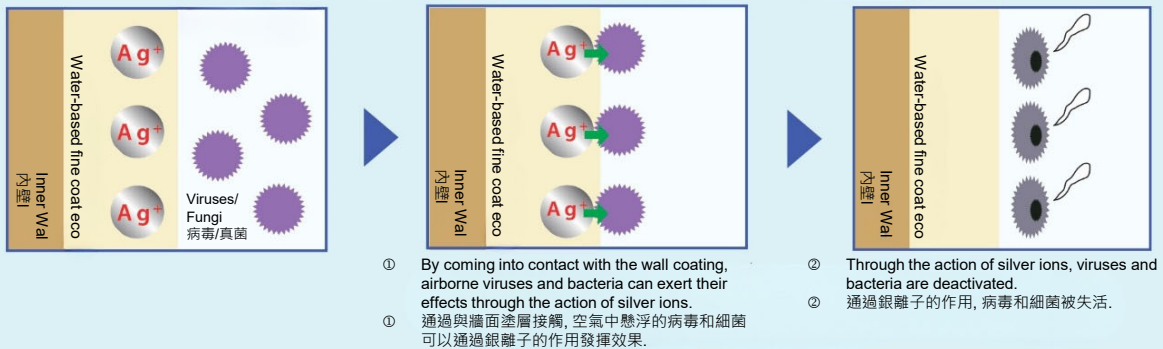


特長

① ANTIVIRAL AND ANTIBACTERIAL 抗病毒和抗菌

The Water-based Fine Coat Eco contains a special silver-based antibacterial agent (AG+). It inhibits the enzymatic activity against bacteria and acts on the envelope of viruses, thereby suppressing the activity and reproduction of viruses and bacteria.
水性Fine Coat Eco含有特殊的銀離子抗菌劑 (Ag+)。它通過抑制酶的活性來對抗細菌，並通過作用於病毒的包膜來抑制病毒和細菌的活動和繁殖。

The antiviral and antibacterial mechanism of silver ions 銀離子的抗病毒和抗菌機制



Antiviral Test 抗病毒測試

Water-based Fine Coat Eco has been proven to reduce 99.9% of A-type influenza viruses with envelopes in antiviral tests conducted by third-party organizations.

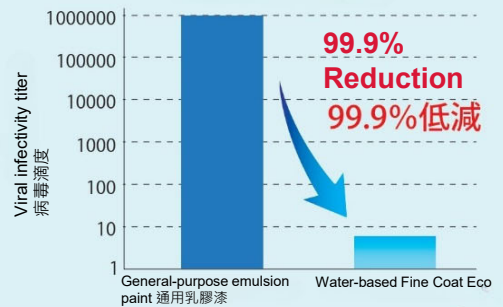
Viruses are classified into those with a lipid-soluble outer membrane called an envelope and those without. Influenza viruses are representative of viruses with envelopes, while noroviruses are representative of viruses without envelopes.

水性Fine Coat Eco經第三方機構的抗病毒測試証實，可以帶有包膜的A型流感病毒減少99.9%

<病毒分類>

病毒分為帶有脂溶性外膜 (稱為包膜) 和不帶包膜的兩類，帶有包膜的代表性病毒包括流感病毒，而不帶包膜的代表性病毒包括諾如病毒。

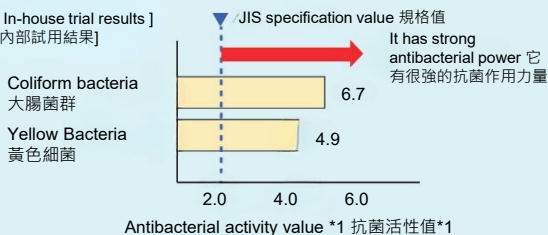
Antiviral Test results 抗病毒測試結果



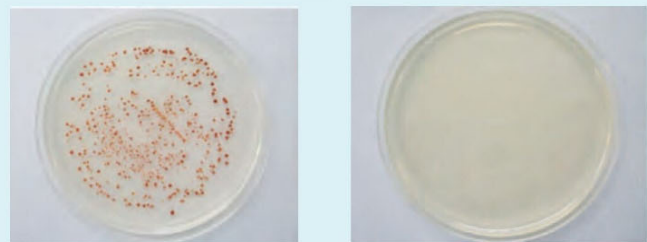
Antibacterial Test 抗菌試驗

Water-based Fine Coat Eco has demonstrated sufficient antibacterial efficacy against Escherichia coli and Staphylococcus aureus in tests conducted in accordance with JIS Z2801 (film contact method).
水性Fine Coat Eco在符合JIS Z2801 (膜接觸法) 的測試中，對大腸杆菌和金黃色葡萄球菌表現出足夠的抗菌效力。

[In-house trial results]
[內部試用結果]



Photograph of the test results for Escherichia coli 大腸杆菌的測試結果照片



General-purpose emulsion paint
通用乳膠漆

Water-based Fine Coat Eco

It demonstrates the ability to reduce the number of bacteria logarithmically within 1 to 24 hours, with higher values indicating stronger antibacterial efficacy. (JIS standard specifies an antibacterial activity value of ≥ 2.0).
它表明在1到24小時內以對數形式減少細菌數量的能力，數值越大表示抗菌效力越強。(JIS標準規定抗菌活性值 ≥ 2.0)。

② Ultra Low VOC
超低VOC

Being water-based, it is a safe paint with ultra-low VOC (total volatile organic compound content of 0.01% or less).
由於使用水性材料, 這是一種安全的塗料, 具有超低揮發性有機化合物 (總揮發性有機化合物含量低於0.01%)

③ Low Odor
低臭

Due to the extremely low volatile organic compound (VOC) content, there will be no unpleasant odor even after painting, allowing for a comfortable living environment.
由於極低的揮發性有機化合物 (VOC) 含量, 即使在塗漆後也沒有令人不愉快的氣味, 使您可以享受舒適的生活環境。

④ CONTAMINATION REMOVABILITY
污染除去性

With its special acrylic emulsion, this product facilitates easy removal of adhered dirt and provides excellent stain removal capabilities.
由於特殊的丙烯酸乳液, 該產品可以輕鬆擦拭附着的污垢, 具有出色的污染去除能力。

Decontamination Test 污染除去試驗

Wiping off Photo
(with gloss)
擦拭照片
(有光澤)



General-purpose emulsion paint
通用乳膠漆



Water-based Fine Coat Eco

[Test Procedure]
Immediately after applying a fluorescent pen, it was wiped off with a neutral detergent.

[測試內容]
在塗抹螢光筆後立即使用中性洗滌劑擦拭。

*As time passes, the dirt becomes more difficult to remove, so please promptly wipe it off.

*隨着時間的推移, 污垢會變得更難清除, 請儘快擦拭乾淨。

⑤ ANTI-ALGAE AND ANTI-MOLD
⑤ 防藻及防黴特性

It has algae and mold resistant, helping to maintain aesthetics and minimize adverse effects on health.
它具有抗藻和抗黴性能, 有助於保持美觀並減少對健康的不良影響。

Standard Application Specifications
標準應用規範

Process 流程	Material 塗料名稱	Application tools 施工時間	No. of coats 施工層數	Interval time (23°C) 間隔時間	Theoretical usage (kg/m ²) 理論用量
Substrate Preparation 表面處理	To ensure a clean and dry surface, it is important to remove any dirt, unhardened cement powder, rust, oil matter, and other attachments. This can be achieved by utilizing wire brushes, scrapers, sandpaper, waster cloth, or other suitable tools. By thoroughly cleaning the surface, you will create an ideal foundation for your project. 為了確保表面乾淨和乾燥, 需要使用鋼絲刷, 刮刀, 砂紙, 廢布等工具來清除任何污垢, 未硬化的水泥粉末, 鐵銹, 油脂和其他附着物. 通過徹底清潔表面, 您將為項目打下理想的基礎。				
Undercoat 底漆	Kikusui Primer Super WE Main material 主材: 16kg Fresh water 清水: 3-8L	Airless spray Wool roller Brush 無氣噴塗, 滾塗, 刷塗	1	3 hours or more 3 小時或以上	80-160m ² /16kg 0.1-0.2kg/m ² (0.08-0.10kg/m ²)
Topcoat 面漆	Kikusui Water-based Fine Coat Eco Main material 主材: 16kg Fresh water 清水: 0.8-1.6L	Wool roller 滾塗	2	5 hours or more 5 小時或以上	45-64m ² /16kg 0.25-0.36kg/m ² (0.15-0.20kg/m ²)

Note:

- Construction tools and conditions are typical.
施工工具和條件是典型的。
- The values of interval time and required volume are standard. The values may vary slightly depending on the application method, equipment, shape of the object to be coated, condition of the substrate, and application conditions.
間隔時間和所需塗料量的數值是標準的. 根據應用方法, 設備, 被塗物體的形狀, 基材狀況和施工條件, 數值可能會略有變化。
- Please confirm the required amount by comparing with the paint sample or by using the amount per unit area.
請通過與塗料樣本進行比較或使用單位面積的用量來確認所需量。
- When applying to interior restricted areas, apply less than the amount of coating.
在室內限制區施工時, 請使用少量塗料。
- KIKUSUI PRIMER SUPER WE is not an ultra-low VOC primer.
KIKUSUI PRIMER SUPER WE 不是超低揮發性有機化合物底漆。

Water-based Fine Coat Eco (Glossy)
Compliant with JIS K 5660 Glossy Synthetic Resin Emulsion Paint.
符合JIS K 5660光澤合成樹脂乳液塗料

Test Item 測試項目	Standard 標準	Result 結果
Condition inside the container 容器內部狀況	When stirred, it should be uniform and free of hard lumps. 攪拌時應均勻, 無硬塊.	Passed 合格
Paint workability 塗料施工性	Even with two coats, there should be no problem with paint workability. 即使塗兩層, 塗料施工性也不會有問題.	Passed 合格
Low temperature stability (-5°C) 低溫穩定性 (-5°C)	No change 無改變	Passed 合格
Drying time 乾燥時間	Standard condition 標準時間	Within 2 hours 2小時內
	5°C	Within 4 hours 4小時內
Appearance of paint film 漆膜外觀	The appearance of the paint film shall be normal. 漆膜外觀應正常.	Passed 合格
Opacity % (White and light) 不透明度% (白色和淺色)	95 or above 95 或以上	97
Specular gloss (60 degrees) 鏡面光澤 (60度)	Over 70 70 以上	83
Water resistance 耐水性	There shall be no abnormalities after 96 hours of immersion. 浸泡96小時後應無異常現象.	Passed 合格
Alkali resistance 耐鹼性	There shall be no abnormality after 48 hours of immersion 浸泡48小時後無異常現象.	Passed 合格
Wash resistance 耐洗性	It shall be withstand 500 washes. 應能承受500次洗滌.	Passed 合格
Wet and cold resistance 耐濕和耐寒	Withstands repeated humid and cold heating 可承受反覆潮濕和寒冷的加熱.	Passed 合格
Accelerated weather resistance 加速耐候性	The gloss retention rate is 60% or more, the chalking grade is 1 or 0, and there is no difference in the degree or color change compared to the sample product. 保光率60%以上, 粉化等級為1級或0級, 與樣品相比, 程度或顏色變化無差異.	Passed 合格
Outdoor exposure weather resistance 經12個月檢驗, 不得出現起泡, 剝落, 裂紋, 變色, 粉化程度不大於樣品	The chalking grade is 2, 1, or 0, there are no cracks, peeling, blisters, or holes, and there is no different in color and gloss compared to the sample. 粉化等級為2, 1 或0級, 無裂痕, 剝落, 起泡, 孔洞, 顏色和光澤與樣品比無差異.	Passed 合格

Water-based Fine Coat Eco (Matte)
Compliant with JIS K 5663 Synthetic Resin Emulsion Paint and Sealer Type 1
合成樹脂乳液膠漆1型.

Test Item 測試項目	Standard 標準	Result 結果
Condition inside the container 容器內部狀況	When stirred, it should be uniform and free of hard lumps. 攪拌時應均勻, 無硬塊.	Passed 合格
Paint workability 塗料施工性	Even with two coats, there should be no problem with paint workability. 即使塗兩層, 塗料施工性也不會有問題.	Passed 合格
Low temperature stability (-5°C) 低溫穩定性 (-5°C)	No change 無改變	Passed 合格
Drying time 乾燥時間	Standard condition 標準時間	Within 2 hours 2小時內
	5°C	Within 4 hours 4小時內
Appearance of paint film 漆膜外觀	The appearance of the paint film shall be normal. 漆膜外觀應正常.	Passed 合格
Opacity % (White and light) 不透明度% (白色和淺色)	93 or above 93或以上	Passed 合格
Water resistance 耐水性	There shall be no abnormalities after 96 hours of immersion. 浸泡96小時後應無異常現象.	Passed 合格
Alkali resistance 耐鹼性	There shall be no abnormality after 48 hours of immersion 浸泡48小時後無異常現象.	Passed 合格
Wash resistance 耐洗性	It shall be withstand 500 washes. 應能承受500次洗滌.	Passed 合格
Accelerated weather resistance 加速耐候性	The chalking grade shall be 1 or less, there shall be no fading, peeling, or cracking, and the degree of color change shall not be greater than that of the sample. 粉化等級應為1級以下, 不得有褪色, 剝落, 裂紋, 變色程度不得大於樣品.	Passed 合格
Outdoor exposure weather resistance 經12個月檢驗, 不得出現起泡, 剝落, 裂紋, 變色, 粉化程度不大於樣品	After 12 months of testing, there shall be no blistering, peeling, or cracking, and the degree of color change and chalking shall not be greater than that of the sample. 經12個月檢測, 無起泡, 剝落, 裂紋, 變色, 粉化程度不大於樣品	Passed 合格



Bonntile Hong Kong Ltd
邦盛建材有限公司
www.Bonntile.com.hk

Flat C2, 11/F, Hang Fung Industrial Building, Phase 2, 2G Hok Yuen Street, Hung Hom, Kowloon, Hong Kong
Tel: 2341 9201 Fax: 2763 5348