

Ketsuron Nain

Are you having trouble with condensation?

你是否遇到冷凝問題？

Applying Ketsuron Nain will solve your problem!

Ketsuron Nain 就能解決您的問題！

Kikusui's proud Long-selling products
菊水的驕傲長銷產品



Dew condensation prevention material Ketsuro Nain 結露防止材

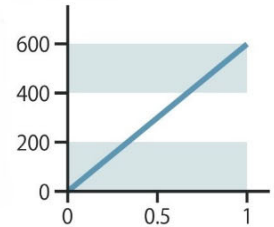
Condensation is a phenomenon in which droplets form on the surface of an object due to “cooling of water vapor” The occurrence of dew condensation may cause mold, dirt, and swelling / peeling of the wall coating film.

結露是由於“水蒸氣的冷卻”而水滴附著在物體表面上的現象。
結露的發生會導致黴菌、污垢和牆壁塗料的膨脹、剝落。

特長 1

High Water Absorption Capacity 優越的吸水性

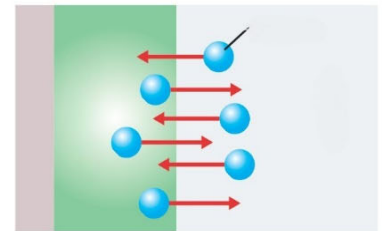
With a coating thickness of 1mm, it absorbs up to 600ml of dew condensation water per 1m²
以1mm/m²的厚度鋪塗時，可以吸收約600cc (啤酒瓶約一瓶)的水分。



特長 2

Humidity Control 具有調濕特徵

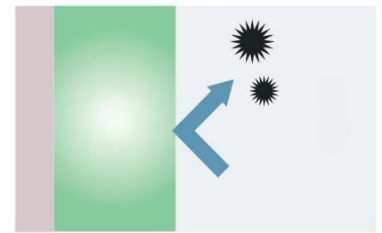
Ketsuro Nain is breathable. When the humidity is high, it absorbs the humidity in the room, and when the humidity in the room is low, it releases it. It demonstrates the function of the traditional Japanese wall.
在室內濕度高時吸收室內濕氣，乾燥時放出水分，通過重復此功能從而達到調節室內濕度的作用。



特長 3

Highly Antifungal 優越的防霉性

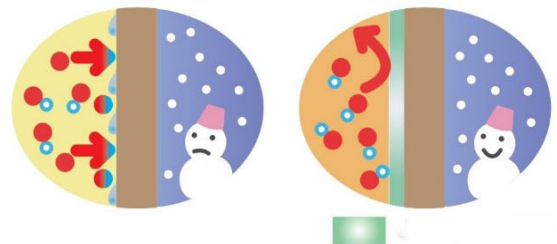
Ketsuro Nain is not simply added with an antifungal agent like general antifungal paints but its compounding material itself has repellent properties against fungi, so it has excellent antifungal effects and sustainability.
與一般市面上所添加的抗真菌不同，不僅僅對真菌有驅避效果，並能長效保持。



特長 4

Heat Insulating Properties 優越的斷熱性能

The thermal conductivity of Ketsuro Nain is 0.08Kcal / mh°C, which is lower than that of general coating materials, so it is less susceptible to the temperature difference between the outside and the room, and condensation is less likely to occur. In addition, the thick film thickness also helps the heat insulation effect.
由於比0.8 Kca / mh°C的一般塗料低，因此室內外濕度差的影響較小，因此不易發生結露。另外，膜的膜厚也有助於隔熱效果。



特長 5

Nonflammable 不燃性能

It is certified as a fireproof material (non-combustible material / semi-non-combustible material / flame-retardant material).

*Ketsuro Nain Juraku is not applicable

*When constructing a part with interior restrictions, please construct with less than the amount of application

認定為防火材料 (不燃材料 / 準不燃材料 / 難燃材料)。

*不適用於KETSURO NAIN JYURAKU *當室內施工限制の場合時，請確認塗佈量。



特長 6

Steel frame structures, anti-condensation coating 鋼鐵骨架，鋼板結露防止

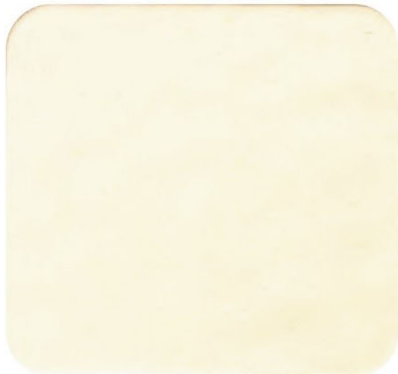
Recently, like residential buildings, steel frame structures such as sports halls, warehouses, and factories have shown a trend towards high sealing. Moisture in the air cools on the surface of the steel frame, causing condensation and various problems. In such an environment that is prone to condensation, conventional coatings are not effective in preventing rust, and special functional coatings are required for protection.

體育館，倉庫，工廠等鋼鐵骨架構造的建築物最近與住宅一樣產生了高密封化的趨勢，大氣中的濕氣在鋼鐵骨架表面冷卻，發生結露現象，產生各種各樣的問題。對於在這樣容易產生結露環境下的鋼鐵骨架，一般塗料很難做到防銹，需要特殊功能的塗膜進行保護。



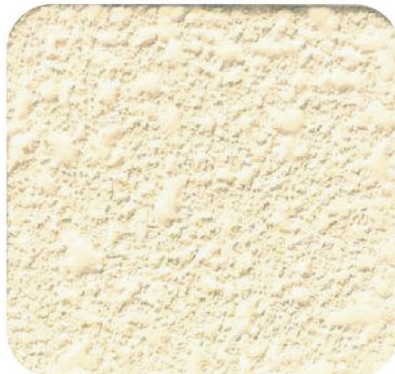
Ketsuronine (Pattern 圖案)

Flat Pattern 平面花紋



Pale Ecclé (K N 0 2 5 D)

Uneven Pattern 不均勻花紋



Pale Ecclé (K N 0 2 5 D)

Orange Peel [Roller] Pattern
橘皮 (滾塗) 花紋



Pale Ecclé (K N 0 2 5 D)

Ketsuronine Juraku (Spraying 噴塗)



Ivory (K N 0 2 8 D)

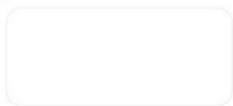


Yellow amber (K N 0 3 5 A)



Khaki amber (K N 0 4 0 F)

Common Color 常用顏色



White



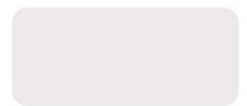
Off-white (KW170C)



Pale Beige (KN024D)



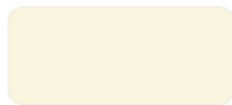
Pale Blue (KN005D)



Light Gray (KN060C)



Cream (KW169C)



Ecclé Beige (KN035D)



Cream Orange (KB156D)



Cream Orange (KN030D)



Gray (KN060A)



Cameo Beige (KN040C)



Khaki Beige (KN020B)



Amber (KN037A)



Thermo Pink (KN049C)



Mint Green (KN011C)

*1. This color sample is printed and may differ from the actual color.
此顏色樣本是印刷的, 可能與實際顏色不同。

*2. Regarding the application finish, some color blurring may occur depending on the application and environmental conditions. Please note.
關於應用效果, 根據應用和環境條件, 可能會出現一些顏色模糊, 請注意。

A & A Can I paint on this kind of base?
我可以在這種基礎上塗漆嗎?

Q Please tell me the undercoat to use on ①steel frames/sheets, ②steel frames with SOP applied, ③wood wool boards, ④Keical boards, and ⑤copper plates.
請告訴我在①鋼框架/板材, ②採用SOP的鋼框架, ③木絲板上使用的底漆④Keical板, 以及⑤銅板

- Q ①steel frames and steel plates: After preparing the surface, use Kikusui SP Primer Evo (1-component anti-rust paint) or Kikusui SP Power Epo (2-component anti-rust paint).
鋼框架和鋼板: 表面處理後, 使用Kikusui SP Primer Evo (單組分防鏽漆) 或 Kikusui SP Power Epo (雙組分防鏽漆)
- Q ②steel frames area with SOP applied If there is no abnormality in the coating film, please use Kabifuji A (water-based primer), and if there is chalking, use Kabifuji B (solvent-based primer).
塗有SOP的鋼架區域, 如果塗膜沒有異常, 請使用Kabifuji A (水性底漆), 如果有粉化, 請使用Kabifuji B (溶劑型底漆).
- Q ③wood wool boards: After preparing the base with a base conditioner such as cement filler, apply Kabifuji B (solvent type).
木絲板: 用水泥填充物等基礎調節劑準備好基礎後, 塗上Kabifuji B (溶劑類型).
- Q ⑤copper plates: Cannot be painted due to corrosion.
銅板: 由於腐蝕而無法上漆.

Q Is it okay to use the ceiling surface in a 24-hour bath (hot spring bath)?
可以在24小時浴(溫泉浴)中使用天花板表面嗎?

Q Can I apply a top coat after applying Ketsuronine?
塗抹ketsuronine 後可以塗上面漆嗎?

Q Keturonine requires time to release water after absorbing it. It cannot be installed in heated pools or 24-hour baths that are constantly exposed to high humidity.
Keturonine吸收後需要時間釋放水分. 不能安裝在持續暴露於高濕度的溫水池或24小時浴池中.

Q Please refrain from using it as it may cause problems with the finish and moisture absorption/desorption/properties.
請不要使用它, 因為它可能會導致問題光潔度和吸濕/解吸/性能.

Standard application specifications 標準應用規範

[Undercoating 底漆]

Process 流程	Materials 塗料名稱	Application Tools 施工用具	No. of coats 施工層數	Interval time 間隔時間 (23°C)	Theoretical usage (kg/m ²) 理論用量	
Concrete 混凝土	Surface Preparation 表面處理	To ensure a clean and dry surface, it is important to remove any dirt, unhardened cement powder, rust, oil matter, and other attachments. This can be achieved by utilizing wire brushes, scrapers, sandpaper, waster cloth, or other suitable tools. By thoroughly cleaning the surface, you will create an ideal foundation for your project. 為了確保表面乾淨和乾燥, 需要使用鋼絲刷, 刮刀, 砂紙, 廢布等工具來清除任何污垢, 未硬化的水泥粉末, 鐵銹, 油脂和其他附着物. 通過徹底清潔表面, 您將為項目打下理想的基礎.				
	Undercoat 底漆	Kabi Fuji A Main Material 主材: 17kg Fresh Water 清水: 9~17L	Brush, Wool roller, Airless spray 刷塗, 羊毛滾塗, 無氣噴塗	1	3 hours or more 3 小時或以上	155~189m ² /17kg 0.09~0.11kg/m ²
Steel, frame, etc. 鋼材, 框架等	Surface Preparation 表面處理	To prepare the surface, It's important to thoroughly remove any mill scale, dust, oils, and fats to ensure it is clean and dry. If there is rust or powder present, you can use sandpaper or a disc to remove it. This will help ensure a smooth and even surface for your project. 仔細清除鋼鐵表面的鐵銹, 塵土, 油脂和脂肪, 使其乾燥和清潔. 對於鐵銹和粉末, 可以使用砂紙和砂盤進行處理. 這樣做可以確保表面光滑均勻, 為您的項目提供良好的基礎.				
	Undercoat 底漆	Kikusui SP Primer Evo Main Material 主材: 16kg Paint thinner 油漆稀釋劑 1.0~1.6L	Wool roller, Airless spray, etc. 羊毛滾塗, 無氣噴塗	1	4 hours or more 4 小時或以上	106~123m ² /16kg

[Pattern 圖案]

Finish 飾面	Process 流程	Materials 塗料名稱	Application Tools 施工用具	No. of coats 施工層數	Interval time 間隔時間 (23°C)	Theoretical usage (kg/m ²) 理論用量
Flat Pattern 平面圖案	Main Coating 主塗層	Ketsuro Nain Main material 主材: 18kg Fresh water 清水: 0~0.2L	Airless spray, Wool roller etc. 無氣噴塗, 羊毛滾塗等	1	4 hours or More 4 小時或以上	15~23m ² /18kg 0.8~1.2kg/m ²
Orange Peel (Roller) Pattern 橘皮(滾筒)圖案	Main Coating 主塗層	Ketsuro Nain Main material 主材: 18kg Fresh water 清水: 0~0.5L	Linthin Gun Caliber 噴槍口徑: 4~6mm Spraying pressure 噴塗壓力: 0.5~0.6Mpa	1	4 hours or More 4 小時或以上	15~18m ² /18kg 1.0~1.2kg/m ²
Small Pop Con Texture 細爆米花圖案	Base Coating 底漆	Ketsuro Nain Main material 主材: 18kg Fresh water 清水: 0~0.2L	Linthin Gun Caliber 噴槍口徑: 4~6mm Spraying pressure 噴塗壓力: 0.5~0.6Mpa	1	4 hours or More 4 小時或以上	23~30m ² /18kg 0.6~0.8kg/m ²
	Pattern Coating 圖案塗層		Linthin Gun Caliber 噴槍口徑: 4~6mm Spraying pressure 噴塗壓力: 0.2~0.3Mpa	1	4 hours or More 4 小時或以上	36~60m ² /18kg 1.0~1.2kg/m ²



Bonntile Hong Kong Ltd
邦盛建材有限公司
www.Bonntile.com.hk

Flat C2, 11/F, Hang Fung Industrial Building, Phase 2, 2G Hok Yuen Street, Hung Hom, Kowloon, Hong Kong
Tel: 2341 9201 Fax: 2763 5348