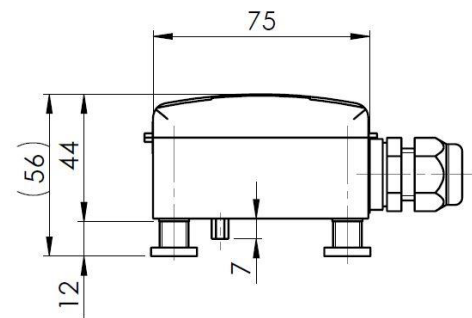
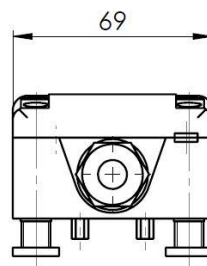


Lead Leak Detection System Ltd.

LEAD Point type sensor – LP-LGM



Product Datasheet



Application

Our LP-LGM reliably detects conductive liquids which is making it ideal for monitoring leakage and moisture content. Main applications are in the building and climate technology.

Point type sensor

Functional description

The leakage monitor works as per the operating principle of electrolytic conductance measurement. There are two electrodes beneath the device which are evaluated by means of AC impedance measurement. As soon as the conductance value between the electrodes rises over an adjustable limit, the relay contact closes. Thanks to the installed passive potentiometer the circuit sensitivity can be adjusted optimally to the required field of application.

Technical data	
Power supply	24 V AC/DC +/-10%
Connection clamp	Screw clamps, max 1.5 mm ²
Power consumption	20 mA
Switching output	Relay 60 V / 1A, potential free changer
Dimensions (WxHxD)	75x69x56 mm
Material	PA6, similar RAL 9010
Cable inlet	M16x1.5 for wire diameter 4...10 mm
Admissible environmental conditions	-30...70 °C; 0...98% r.H.
Protection class	IP65
Temperature sensor	Electrolytic AC measuring
Sensitivity	Adjustable via potentiometer

Installation

Mount the point type sensor LP-LGM with the bracket at the ground, for example under drip tray or any desired location where detection of water is desired using the two measuring tips provided. Adjust the measuring level from 0-12mm by adjusting the level of the four mounting screws. The sensitivity of humidity alarm can also be adjusted via the potentiometer by unplugging the top cover of the point type sensor. Once the LP-LGM is powered with 24V DC power supply, Green LED is lit. The sensor will be activated with RED LED when the measuring tips contact water while the main relay NO contact will be energized as closed circuit and NC contact will be energized as open circuit.

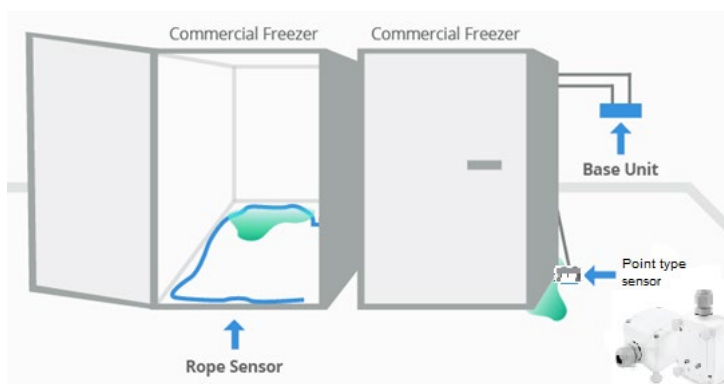
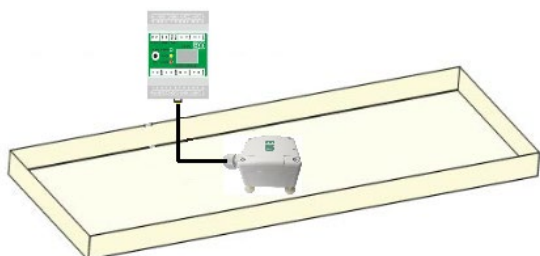
Testing

The water sensor should be periodically tested to ensure proper operation (suggested monthly). After the continuous activation (detection of water) the measuring tips should be cleaned. Wipe or scrape off any accumulated substances to expose the measuring tips.

Kind Reminder to the contractor

Regular maintenance by the installer and frequent testing by the user is VITAL for continuous satisfactory operation of any water leakage detection system. The installer should assume the

responsibility of developing and offering a regular maintenance programme to the user as well as acquainting the user with a proper operation and limitation of the water leakage detection system. Recommendations must be included for a specific programme of frequent testing and maintenance to ensure the systems proper operation at all the times.



Ordering information

LP-LGM

This brochure has been carefully prepared to ensure technical accuracy but is only intended for promotional use. LEAD cannot guarantee that the information contained herein contains no errors or omissions, and hence does not accept responsibility related to the use of its equipment. LEAD maintain its obligations set forth in the Standard Terms and Conditions of Sale and will not, under any circumstances, assume liability for any incidental damages, indirect or consequential, arising from the sale, resale, use or misuse of this product. The purchaser(s) accept their responsibility as the sole judge(s) of the adaptability of the product for the intended use.

2024.10

In the interest of product improvement, specifications are subject to change without notice